

FLIMZIE

*The Newsletter of the Rock River Valley Division
Midwest Region, National Model Railroad Association*



April 2024 Volume 57, Number 8

The Rock River Valley Division, RRVD, is a local division of the Midwest Region of the National Model Railroad Association, NMRA. The RRVD serves NMRA members in areas of Green and Rock Counties of Wisconsin, and Boone, Jo Davies, Lee, Ogle, Stephenson, Whiteside, Carol, DeKalb and Winnebago counties in Illinois. The RRVD holds monthly meetings typically the first Sunday afternoon of each month, September through May. Starting in September, we will be meeting at the **Paulson's Agriculture Museum, 6950 Belvidere Rd, Caledonia, IL 61011**. The meetings consist of various clinics on model railroading, model contests, and drawings for door prizes for NMRA members. All are welcome. The meeting starts at 1:00 PM, and the doors open at 12:30 PM.

2024 BoD & Chairman Directory

Please use the following address to contact the RRVD organization or any of the following officers:

**Rock River Valley Division, NMRA
PO Box 2213
Loves Park, IL 61131-2213**

Superintendent:

Marty Hendrickx
815-978-7326
superintendent@rrvd-nmra.org

Assistant Superintendent:

John Mann
asstsuperintendent@rrvd-nmra.com

Paymaster:

Myron Peterson
ructic@gmail.com

Chief Clerk:

Steve Faivre
815-761-5070
smfaivre@gmail.com

Director:

Gary Loiselle, MMR
815 / 963-8326
hofreight@gmail.com

Director:

Doug Loy
815 / 765-2046
delsclho@yahoo.com

Director:

Ken Peterson
779 / 348-2961
poplarken53@gmail.com

Director (Past Superintendent):

Ray Dyreson
815 / 335-7046
815 / 494-0205
raydyr@aol.com

Show and Sale Chairman:

Doug Loy
815 / 765-2046
delsclho@yahoo.com

Flimzie Editor:

Ken Peterson
779 / 348-2961
poplarken53@gmail.com

Membership Chairman:

Ken Mosny
815 / 965-4871
kenmosny@gmail.com

Clinics Chairman:

Ron Johnson
779 / 774-5431
rondjohn@earthlink.net

Contest Chairman:

Ray Dyreson
815 / 494-0205
raydyr@aol.com

Layout Tours Chairman:

Bert Morris
815 / 520-1307
winxxx1115@gmail.com

Division Publicity Chairman:

Joe Whinnery
815 / 398-8973
phowhin@yahoo.com

Nomination and Election Chairman:**Advancement Chairman:**

Gary Loiselle, MMR
815 / 963-8326
hofreight@gmail.com

Show and Sale Registrar:

Ken Mosny
815 / 965-4871
kenmosny@gmail.com

Office Vacancies

Division Publicity Chairman. This person would be responsible for contacting organizations (newspapers, local ad flyers, TV stations public announcements, magazines, etc.) that would publicize our meets, train shows, and other activities. If you are interested in serving in this capacity, contact Marty Hendrickx, 815-978-7326, superintendent@rrvd-nmar.org.

Flimzie Deadlines

The Flimzie is published once per month on the first of the month. It will be placed on the RRVD website for anyone that wants to read it.

The content for the Flimzie comes from you, our readers. Please submit your articles, pictures and editorial comments to the Editor, Ken Peterson, poplarken53@gmail.com, no later than 10 days before the 1st of the month, i.e., Jan 21, 2024, for a Feb 1st, 2024, publication.

From the Superintendent By Marty Hendrickx

Hello All! It appears winter is over even though it was not much of a winter. Reminds me of the winters I use to experience when we lived in North Carolina, with the exception of the cold and snowy snap we had in the middle of January. I got the blades for the tractor sharpened and I will be getting the tractor out of storage and putting the snow blower away for the winter.

Hopefully most if not all of you were able to attend the Rock River Valley Train Show back on either the 16th or 17th of March. The show was earlier than we normally hold it and that caused some conflicts with other events going on in the Midwest. We already have the dates for next year and it will be held at Harlem High School again on the 29th and 30th of March, which is the last weekend in March which is our normal time. Because of the conflicts, our vendor participation was down some from last year but still had over 40 vendors and sold over 200 tables for the event. We still had sixteen display layouts and they were all magnificent. It seems like every year the layout participation gets better and better. Several of them have been written up in national publications and have participated in large shows and conventions. We are truly honored to have them at our show.

With all that being said our attendance was up significantly this year. The board had made a concentrated effort to reach out to potential attendees in the Chicago area. We ran an ad in the Northwest Quarterly that covers the northwest suburbs of Chicago, and we sent out flyers to all of the major hobby shops in the Chicago area. Reviewing the door prize registrations, it appears we have more attendees coming from the Chicago area than we have seen in the past. We had over 2000 folks through the door with almost 1700 adults and the balance being no charge children. We plan to continue our efforts to draw additional attendees from Chicago for next year.

The final numbers are not in as we are still figuring out all of our expenses, but the show was a success, and we will have enough money to fund our division's activities for the next year. Thanks to everyone who helped this year with all the work required to make the show a success.

Our next meet is at Paulson's on the 7th of April, and it will be our annual business meeting and election of officers. I would like as many of our members to attend as possible. We will review our financial statements and discuss our plans for the coming year. This is also your opportunity to ask questions though I and the other officers and board members are always available to discuss with you questions and concerns. We will then vote on the officers and board of directors for the upcoming year.

May is our semi-annual trip to Madison for our joint meet with the South Central Wisconsin Division. They have a very nice venue. They meet at Verona Senior Center, 108 Paoli Street, Verona, WI 53593. We normally carpool to save some on gas so get with your friends and let's attend. Last time, two years ago, they had nice refreshment spread and three very nice layouts on the tour.

From the Editor By Ken Peterson

Friends of the Flimzie, I need to point out that this publication is for you and by you. All the articles that appear here are written by members of the RRVD. If you don't submit articles for publishing, there is no content. When I took over as the editor, I wanted to change the Flimzie from a quarterly publication to a monthly one. Without articles from you, I may have to switch the Flimzie back to quarterly, or even just occasionally, based on when I get content. This will be completely up to you.

What Are Friends For? Chapter 30 Gary D. Loiseau

In chapters 28 and 29, I told you about RRVD members that have been published or featured in some fashion or another in various model railroad related publications. I want to draw your attention in this chapter to the December 1995 issue of *Railroad Model Craftsman*. The article is titled Modeling the Muskogee Packing Company. **(Photo 1)** The article, photos and featured model were submitted by Bruce Brantner, Jr.. Bruce was a frequent visitor to the RRVD. He actually lived down by LaSalle/Peru which is in the Illinois Valley Div. I used a photo from Bruce's layout in Chapter 21. **(Photo 2)** The building in Bruce's article was based on a building in Rockford. It has changed ownership and use over the years, but it still stands at the corner of Market St. and Water St. in downtown Rockford. **(Photo 3)** As the signage attests, the building was Cudahy Packing Co. **(Photo 1 insert.)**

The actual connection to the RRVD comes by way of John Mann MMR. For a number of years, John presented a variety of projects to assist us in completing the NMRA Achievement Program requirements for Master Builder-Structures. The requirements are available on-line.

John was also able to arrange a presentation at one of the RRVD'S monthly meets by a Mr. DeWeerd. His first name escapes me. His son, Cal, was a

long-time realtor in Rockford. The elder Mr. DeWeert was the last manager when the building was still operating as a meat packing facility. If memory serves me, the facility was a distribution point for the Rockford area. Reefers would bring meat over from Freeport. Trucks would take it from there. Sounds like an opportunity to put together that icing platform you bought and didn't know what to do with. WAFF

I do not know how much time I spent on this structure. I was fortunate to have a copy of the blueprints for the building. They helped me construct the A-frame type structure on the roof. **(Photo 4A, 4B)** Functionally, that was the cooling tower for the refrigeration equipment to keep the "product" fresh in storage.

The blueprint also showed me that the roof was not level. There was a taper that formed a valley off toward one side. You may be able to see it in **Photo 5**. Oh, for those who may be in the "rivet counter" genre, yes, those vents on the roof are rivets. WAFF

While we on the subject of roofs, take a look at **Photo 6**. The structure is an assembled pretty much out-of-the-box Walthers Cornerstone kit. (Allied Rail Rebuilders # 933-3016) To fit where I have it on my layout, I had to modify the wall on the left side. I also used my modeler's license to convert Allied Rail Rebuilders to Advanced Metal Products.

Now, the real fun comes in when you take a look at the large vents on the roof(s). (WAFF) They are not an out-of-the-package 'roof' detail. Actually, if you know me as an "open load" enthusiast, you may recognize these as Walthers #933-1499 steel coil loads. And, as a model railroader, you know when you buy one package of something that's fine, several is better. I have also methods of creating coil loads other than using commercial kits. (Could be a topic for later.) So what do you do with an "over supply" of steel coils? You could add to your fleet of cars for hauling coiled steel. **(Photos 8 A, 8 B)** Or, you could hone your weathering skills and add a scenic element to an industry or two. **(Photos 9, !0.)** Just a thought. What are Friends For! Gary

In chapters 28 and 29, I told you about RRVD members that have been published or featured in some fashion or another in various model railroad related publications. I want to draw your attention in this chapter to the December 1995 issue of *Railroad Model Craftsman*. The article is titled Modeling the Muskogee Packing Company. **(Photo 1)** The article, photos and featured model were submitted by Bruce Brantner, Jr. . Bruce was a frequent visitor to the RRVD. He actually lived down by LaSalle/Peru which is in the Illinois Valley Div. I used a photo from Bruce's layout in Chapter 21. **(Photo 2)** The building in Bruce's article was based on a building in Rockford. It has changed ownership and use over the years, but, it still stands at the corner of Market St. and Water St. in downtown Rockford.

(Photo 3) As the signage attests, the building was Cudahy Packing Co. **(Photo 1 insert.)**

The actual connection to the RRVD comes by way of John Mann MMR. For a number of years, John presented a variety of projects to assist us in completing the NMRA Achievement Program requirements for Master Builder-Structures. The requirements are available on-line.

John was also able to arrange a presentation at one of the RRVD'S monthly meets by a Mr. DeWeerd. His first name escapes me. His son, Cal, was a long-time realtor in Rockford. The elder Mr. DeWeert was the last manager when the building was still operating as a meat packing facility. If memory serves me, the facility actually was a distribution point for the Rockford area. Reefers would bring meat over from Freeport. Trucks would take it from there. Sounds like an opportunity to put together that icing platform you bought and didn't know what to do with. WAFF

I do not know how much time I spent on this structure. I was fortunate to have a copy of the blueprints for the building. They helped me construct the A-frame type structure on the roof. **(Photo 4A, 4B)** Functionally, that was the cooling tower for the refrigeration equipment to keep the "product" fresh in storage.

The blueprint also showed me that the roof was not level. There was a taper that formed a valley off toward one side. You may be able to see it in **Photo 5**. Oh, for those who may be in the "rivet counter" genre, yes, those vents on the roof are rivets. WAFF

While we on the subject of roofs, take a look at **Photo 6**. The structure is an assembled pretty much out-of-the-box Walthers Cornerstone kit. (Allied Rail Rebuilders # 933-3016) To fit where I have it on my layout, I had to modify the wall on the left side. I also used my modeler's license to convert Allied Rail Rebuilders to Advanced Metal Products.

Now, the real fun comes in when you take a look at the large vents on the roof(s). (WAFF) They are not an out-of-the-package 'roof' detail. Actually, if you know me as an "open load" enthusiast, you may recognize these as Walthers #933-1499 steel coil loads. And, as a model railroader, you know when you buy one package of something that's fine, several is better. I have also methods of creating coil loads other than using commercial kits. (Could be a topic for later.) So what do you do with an "over supply" of steel coils? You could add to your fleet of cars for hauling coiled steel. **(Photos 8 A, 8 B)** Or, you could hone your weathering skills and add a scenic element to an industry or two. **(Photos 9, !0.)** Just a thought. What are Friends For! Gary



Photo 4B



Photo 6



Photo 5

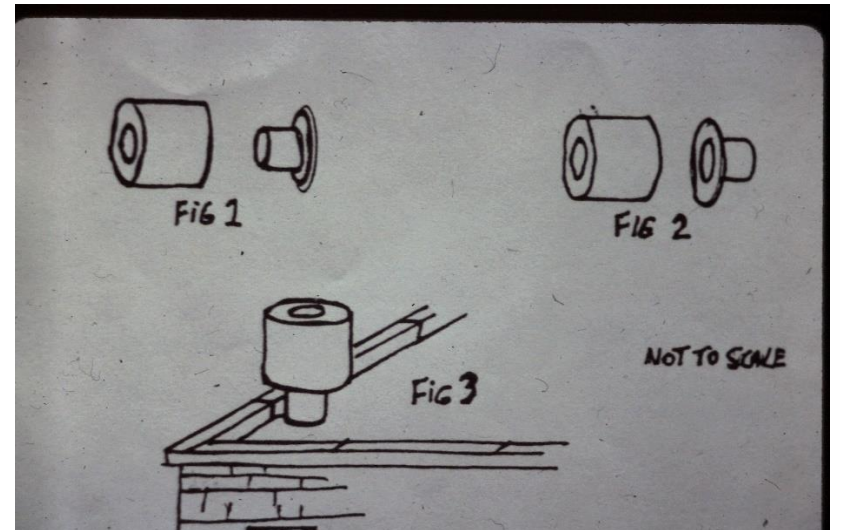


Photo 7



Photo 8A



Photo 9



Photo 8B



Photo 10

Photos For Next Month's Layout Tour By Joe Winnery

Here are some photos of the O scale the April RRVD layout tour. It is a literal wall to wall, room to room, full basement display. You will not be disappointed. You will be amazed at the size and amount of detail. The address of the O scale layout is 3886 Lookout Drive 61109. Look for the church west of Jefferson High School, and go south, then left.



Photo 1



Photo 2

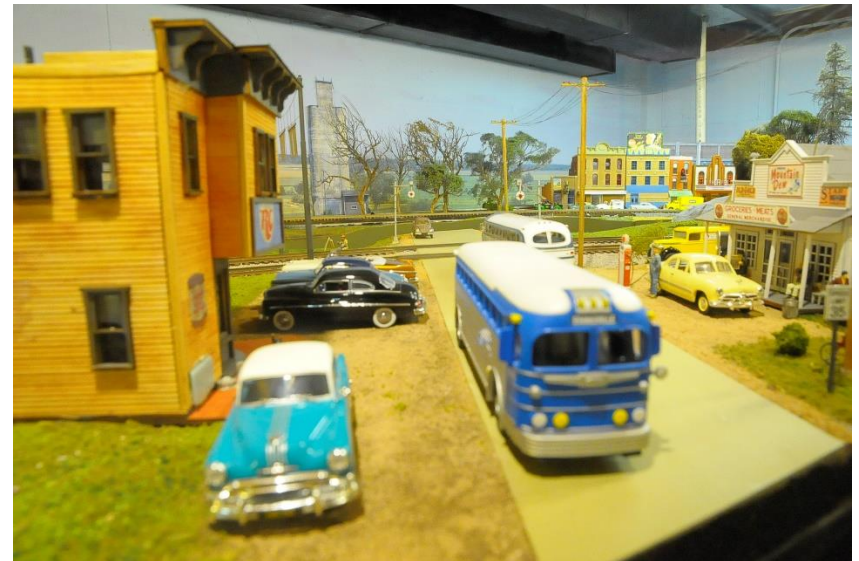


Photo 3



Photo 4



Photo 6



Photo 5



Photo 7

Some pictures from our March Train Show and Sale.



Winners of the Layout Best of Show



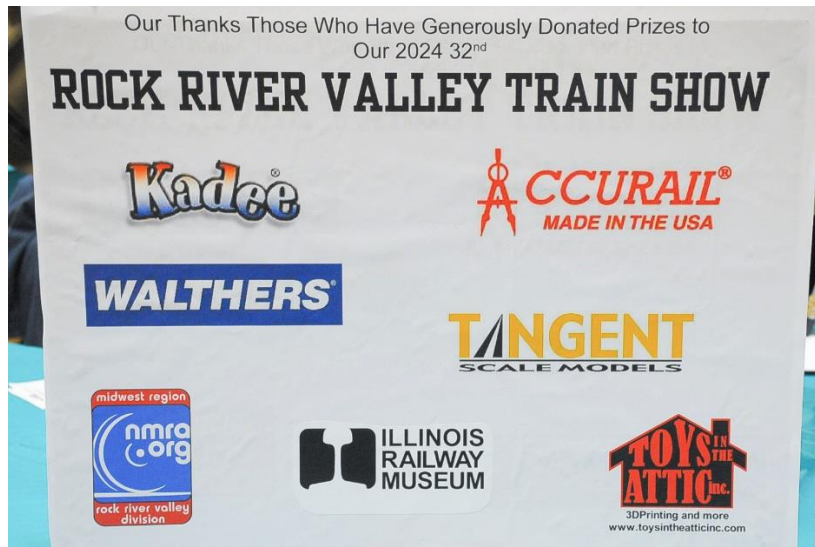
HO Scale Display Layout



Children's Raffle Drawing, Train Set



N Scale Display Layout



Companies and Organizations that Donated Door Prizes



Ken Peterson and Marty Hendrickx Promoting our Train Show at the Channel 23 Studio. Layout by Ken Peterson
